

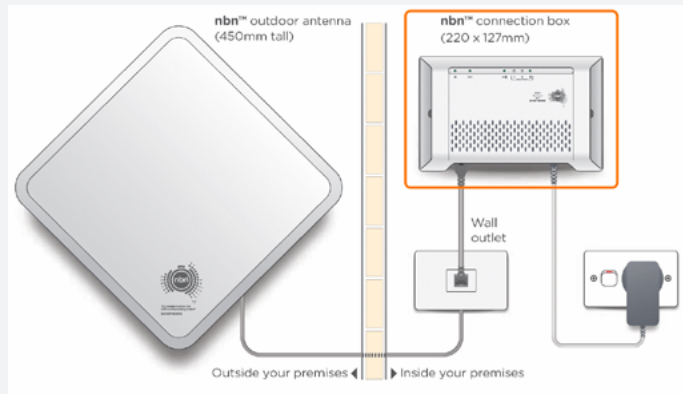
nbn Fixed Wireless



These instructions explain how to connect your Leaptel router to the nbn.

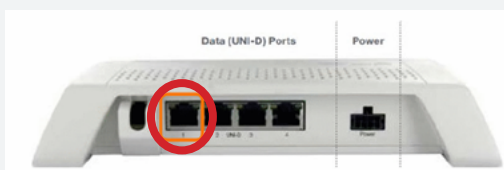
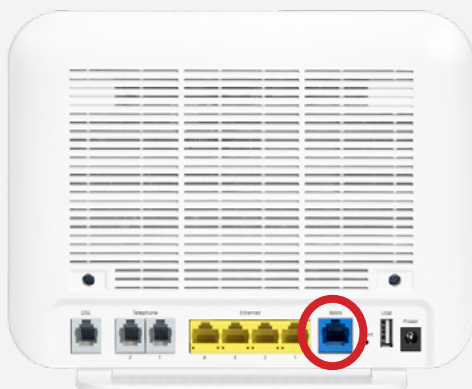
Please contact support if you have any questions, our contact details are on the back page.

1. Locate the NBN NTD. It looks something like this:



2. Unpack your supplied Netcomm Router and connect the power near the nbn NTD and turn it on.

3. Run the supplied yellow network cable from the blue WAN port on the Netcomm Router to the NBN NTD. Unless you have been told otherwise, you should plug into the port UNI-D 1.



4. Turn your modem on by pressing the On/Off button located on the side of the modem.



5. You should now see the WAN light located on the front of the router is now green.

6. After 60 seconds the internet light should also come on.



7. You are now online and able to connect to the internet.

- a) If you wish to connect via wireless, look on the bottom of your modem for your wireless details and use the credentials supplied to connect your computer up. Your wireless details are also provided on a card in the box with your modem. For further information on how to do this please consult your devices documentation or the Leaptel website
- b) If you wish to connect via ethernet cable, you need to plug your cables into the yellow ethernet ports between your computer and the modem. Some homes have had ethernet cable run which can be used for this purpose. Please talk to your electrician or builder for further information.

Contact Us

By Phone

1300 205 327
9am-9pm Mon-Fri
9am-7pm Sat & Sun
Times are Melbourne local time.



Online

leaptel.com.au
9am-9pm Mon-Fri
9am-7pm Sat & Sun
Times are Melbourne local time.



Public Holiday Hours

Australian Public Holidays: Closed
Victorian Public Holiday: Weekend Hours

By Email

support@leaptel.com.au

