

# Asus RT-AX56U

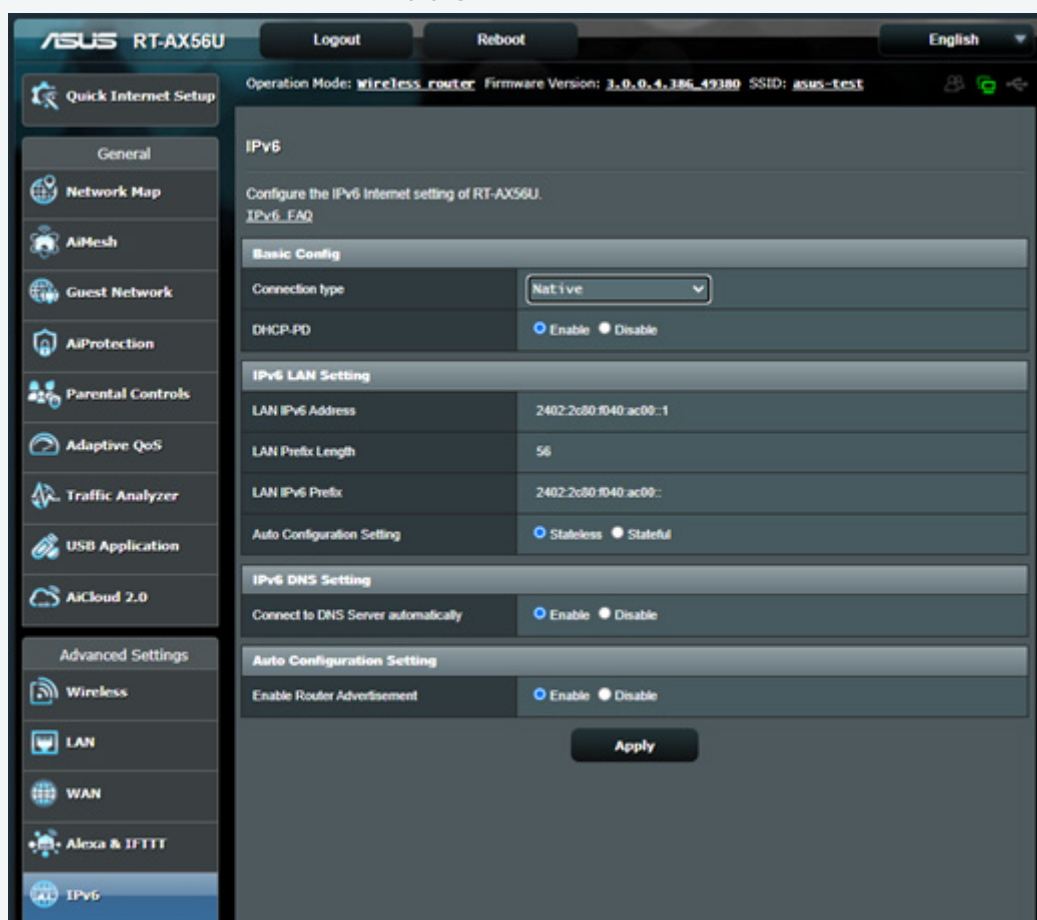


These instructions are to help you configure your router for IPv6. Please note that different firmware versions and models of routers may have slightly different configurations.

**Firmware Version Tested:** 3.0.0.4.386\_49380

**Connection Type:** IPoE - Ethernet

1. Open a web browser, such as Google Chrome or Mozilla Firefox, type <http://router.asus.com> or **http://192.168.50.1** into the address bar, and press **Enter**.
2. Log in using the default username **admin** and default password **admin**. If you have previously changed these details, you will need to login with the changed details instead. Alternatively, you can factory reset the router to reset the gateway login details.
3. Once logged in, navigate to **IPv6**, and configure it as below.
  - Connection type: **Native**
  - DHCP-PD: **Enable**
  - Auto Configuration Setting: **Stateless**
  - Connect to DNS Server automatically: **Enable**
  - Enable Router Advertisement: **Enable**



Please note that this document is intended as a guide only and is not for a router that we currently sell. Our support team will not be able to advise of further steps, and recommend contacting the manufacturer if you need further assistance with the configuration of this device.