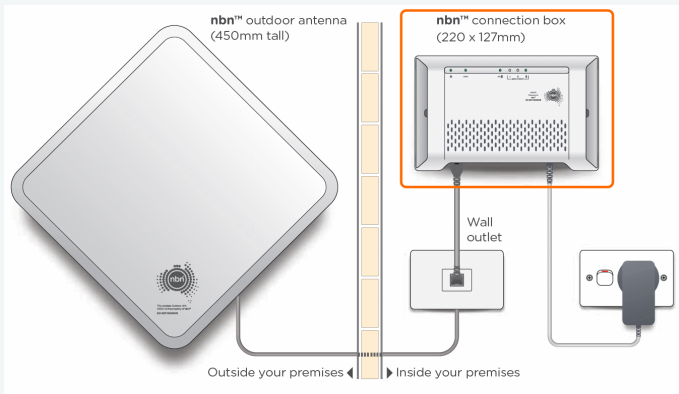


# nbn Fixed Wireless



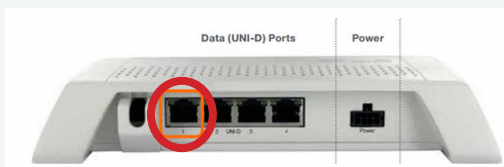
These instructions explain how to connect your Leaptel router to the nbn. Please contact support if you have any questions, our contact details are at the bottom.

1. Locate the NBN NTD. It looks something like this:



2. Unpack your supplied TP-Link Router and connect the power near the nbn NTD and turn it on.

3. Run the supplied yellow network cable from the yellow WAN port on the TP-Link Router to the NBN NTD. Unless you have been told otherwise, you should plug into the port UNI-D 1.

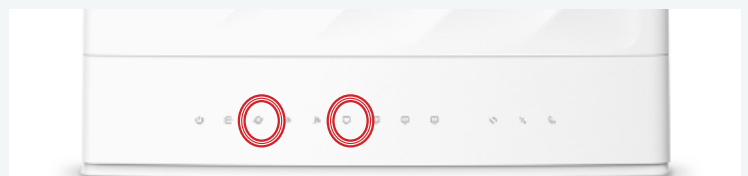


4. Turn your modem on by pressing the On/Off button located on the back of the modem.



5. You should now see the WAN light located on the front of the router is now green.

6. After 60 seconds the internet light should also come on.



7. You are now online and able to connect to the internet.

- a) If you wish to connect via wireless, look on the bottom of your modem for your wireless details and use the credentials supplied to connect your computer up. Your wireless details are also provided on a card in the box with your modem. For further information on how to do this please consult your devices documentation or the Leaptel website
- b) If you wish to connect via ethernet cable, you need to plug your cables into the yellow ethernet ports between your computer and the modem. Some homes have had ethernet cable run which can be used for this purpose. Please talk to your electrician or builder for further information.

Scan the QR code below for more guides



Further information: [leaptel.com.au/support/set-up/setting-up-your-router](http://leaptel.com.au/support/set-up/setting-up-your-router)  
 Contact us: [leaptel.com.au/contact-us](http://leaptel.com.au/contact-us)

Further information: [www.leaptel.com.au/hardware](http://www.leaptel.com.au/hardware)

Correct as at: 13/05/2026